

Lub Cev (Sab Hauv)

the body (internal)

(lub) pob qa
(lub) pob qaa
larynx, voicebox

(txoj) hlab pas
(txuj) hlaab paas
windpipe, trachea

(lub) ntsws
lung

(cov, tus) tav
(cov, tug) taav
rib

(txoj) hlab ntsha
(txuj) hlaab ntshaa
blood vessel (vein or artery)

(daim) siab
(dlaim) sab
liver

(lub) tsib
gall bladder

(txoj) hnyuv tws
(txuj) nyuv twg
appendix

(lub) zais zis
(lub) zaig zig
bladder

(cov) hlwb txha
(cov) hlwb txhaa
bone marrow

(lub, tus) pob txha
(lub, tug) pob txhaa
bone

(cov) pob txha mos
(cov) pob txhaa mog
cartilage

(lub, cov) hlwb, paj hlwb
(lub, cov) hlwb, paaj hlwb

brain

(tus) txha nqaj qaum
(tug) txhaa nqaaj qaum

the spine

(cov) hlwb txha nqaj qaum
(cov) hlwb txhaa nqaaj qaum

the spinal cord

(txoj) hlab qa
(txuj) hlaab qaa
gullet/ esophagus

(lub) plawv
heart

(tus) po
(tug) po
spleen

(lub) ncauj plab
(lub) ncauj plaab

lower esophageal sphincter*

(lub) plab
(lub) plaab
stomach

(lub) raum
kidney

(tus) txiav, (tus) po dawb
(tug) txav, (tug) po dlawb

pancreas

(txoj) hnyuv loj
(txuj) nyuv luaj
large intestine

(txoj) hnyuv mos
(txuj) nyuv mog

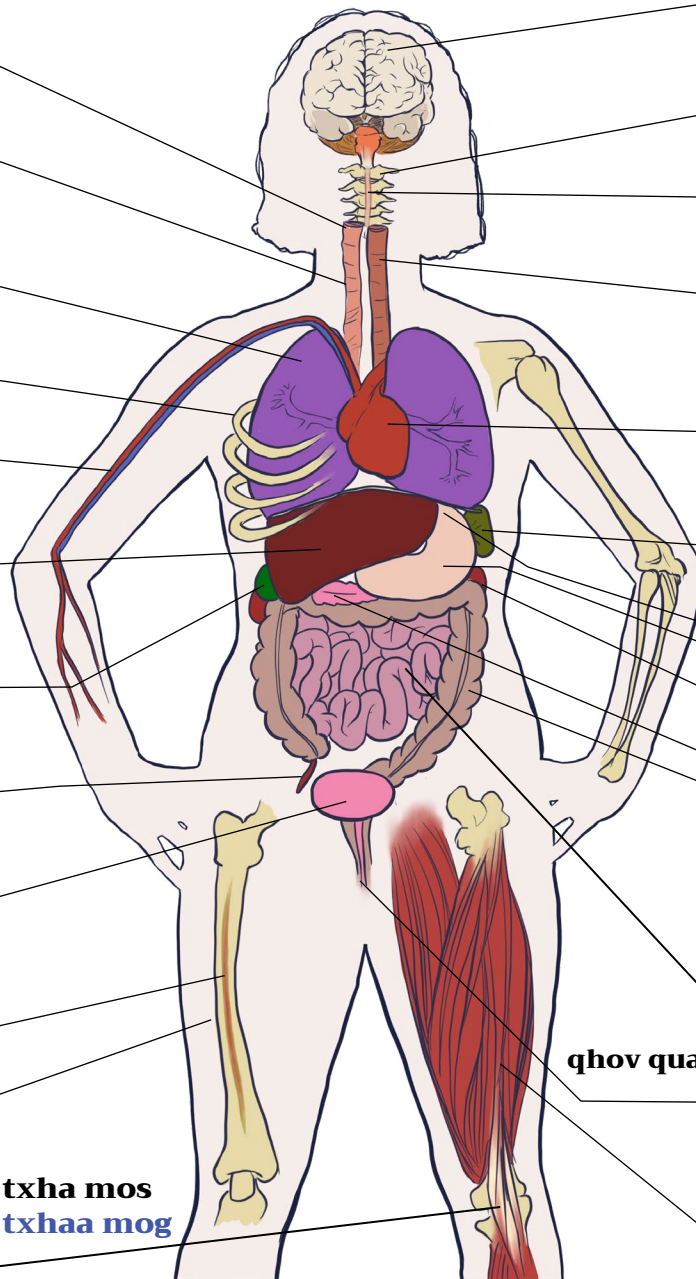
small intestine

qhov quav, ncauj qhov quav

anus

(thooj) nqaj leeg
(thooj) nqaj leeg

muscle



*(can also be reference to ulcer or acid reflux)